

# CERTIFICATE OF LOCATION OF GOVERNMENT CORNER

NORTH QUARTER Corner of Section 32, Township 107N, Range 39W

5th Principal Meridian, State of Minnesota, County of MURRAY

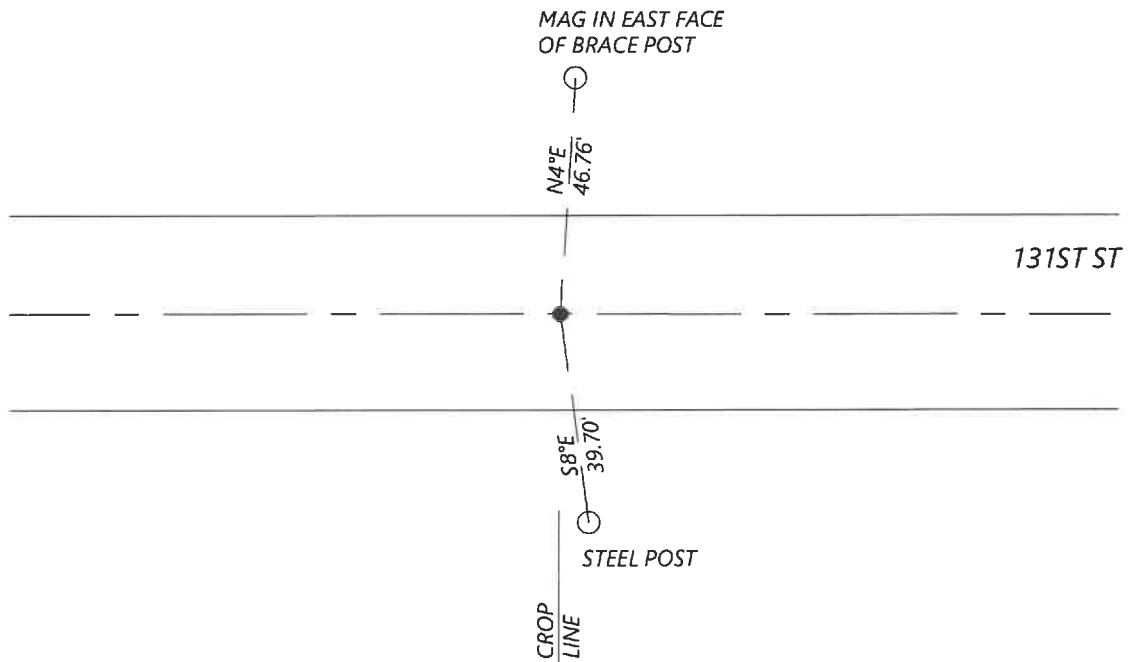
At the corner location shown on the sketch:

On 8/27/2020 found a 6"X6" CONCRETE MONUMENT AND RAILROAD SPIKES 0.25' NORTH AND 0.4' SOUTH  
DATE

left monument as found       lowered monument       removed monument (explain)

On \_\_\_\_\_ placed a \_\_\_\_\_  
DATE

### SKETCH OF REFERENCE TIES



Statement of evidence for this corner location is on back of this page.

I hereby certify that this document was researched and prepared by me or under my direct supervision and that I am a licensed Land Surveyor under the laws of the State of Minnesota.

Signature [Handwritten Signature]  
 Date 6/16/2021 License No. 45874

Title:

- Land Surveyor       Professional Engineer  
 County Surveyor       County Engineer

### OFFICE OF THE COUNTY RECORDER

County of Murray

I hereby certify that this document was filed in the Co.

Recorder's office at \_\_\_\_\_ M. on the \_\_\_\_\_ day of \_\_\_\_\_ A.D. 20

County Recorder Karen Brown  
 by JUN 22 2021, Deputy

DOCUMENT NO. \_\_\_\_\_

**Statement of Evidence:**

North Quarter Corner of Section 32, Township 107 North, Range 39 West, 5th Principal Meridian, Murray County, Minnesota.

*No GLO notes found.*

*May 1975 Highway Department records show a found concrete monument.*

*April 2011 Corner certificate filed by LS43844 shows a found concrete monument and placed railroad spikes on the N and S sides. He lists the Murray County coordinated (1996 adj.) as: N: 167856.41 E: 556251.57.*

*Sept. 2020 Westwood Professional Services searched and found concrete monument and railroad spikes on N and S sides of the monument. Coordinates fit with the 2011 corner certificate. Set additional reference ties.*

Analysis of the recovered data, field evidence and survey measurements, indicates that the monument found is the correct perpetuation of this corner. For additional information concerning this corner please contact Westwood Professional Services.